

Updated

# A POCKET GUIDE FOR Alcohol Screening and Brief Intervention

Updated 2005 Edition

This pocket guide is condensed from the 34-page NIAAA guide, *Helping Patients Who Drink Too Much: A Clinician's Guide*.

Visit [www.niaaa.nih.gov/guide](http://www.niaaa.nih.gov/guide) for related professional support resources, including:

- patient education handouts
- preformatted progress notes
- animated slide show for training
- materials in Spanish

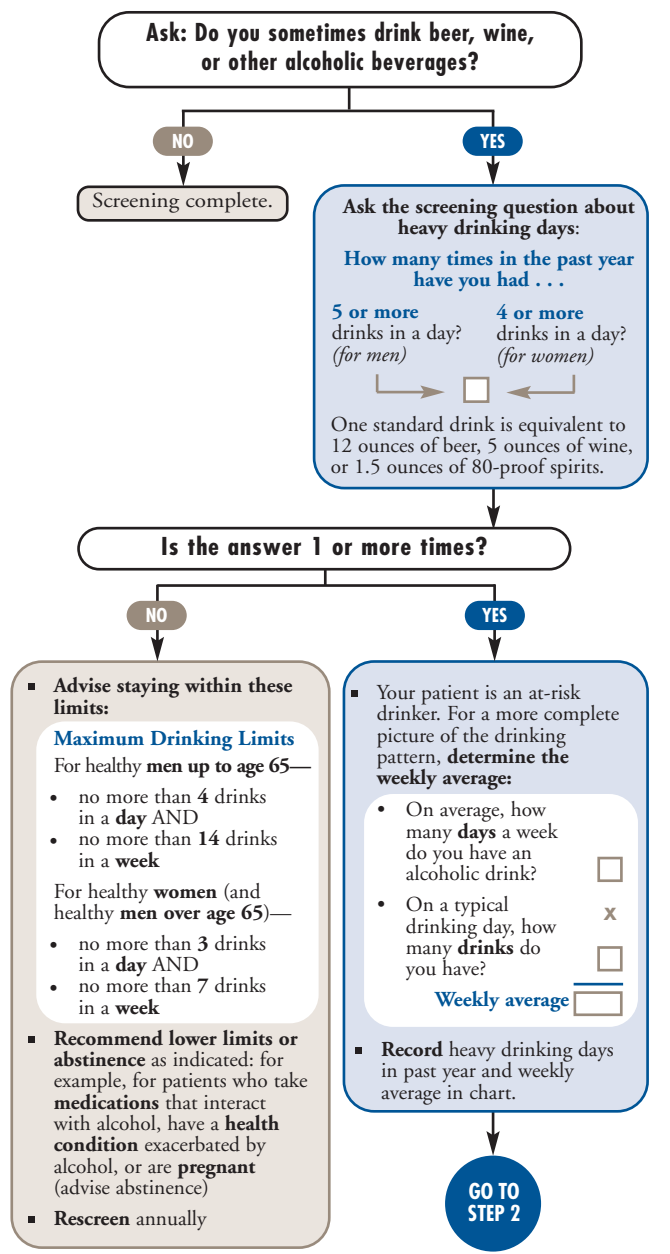
Or contact:

NIAAA Publications Distribution Center  
 P.O. Box 10686, Rockville, MD 20849-0686  
 (301) 443-3860  
[www.niaaa.nih.gov](http://www.niaaa.nih.gov)



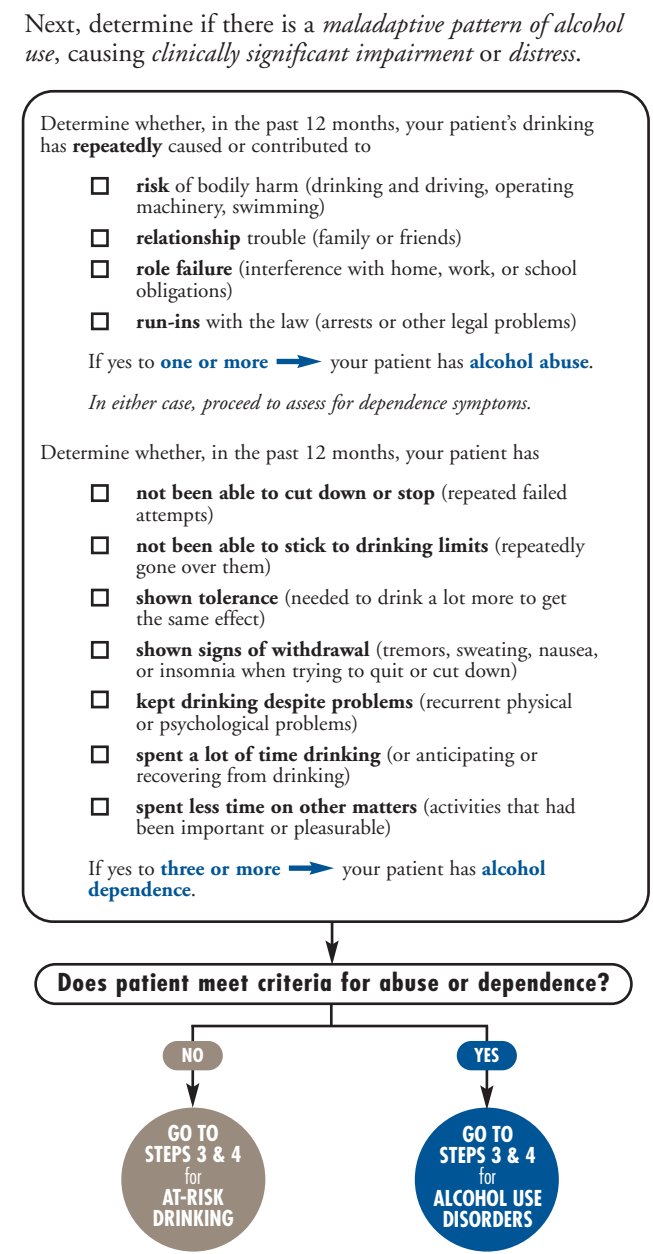
## HOW TO SCREEN FOR HEAVY DRINKING

### STEP 1 Ask About Alcohol Use



## HOW TO ASSESS FOR ALCOHOL USE DISORDERS

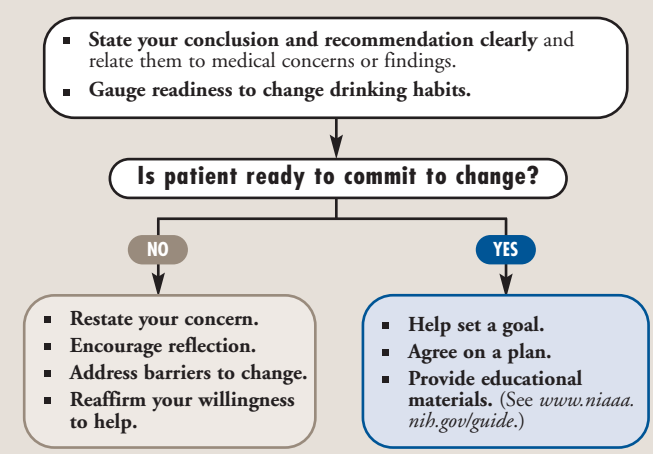
### STEP 2 Assess For Alcohol Use Disorders



## HOW TO CONDUCT A BRIEF INTERVENTION

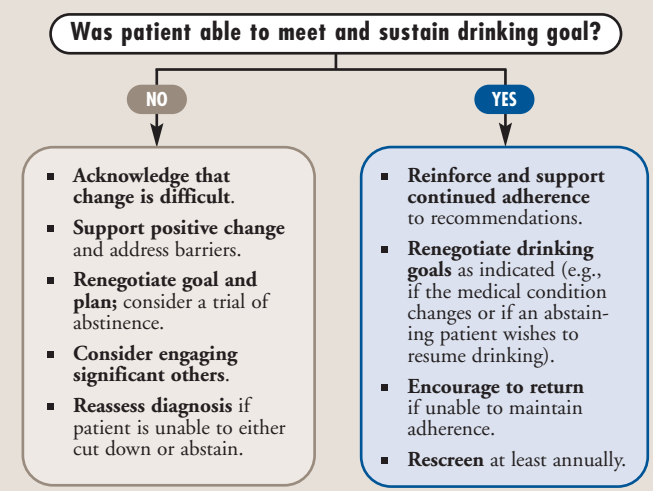
### FOR AT-RISK DRINKING (no abuse or dependence)

#### STEP 3 Advise and Assist



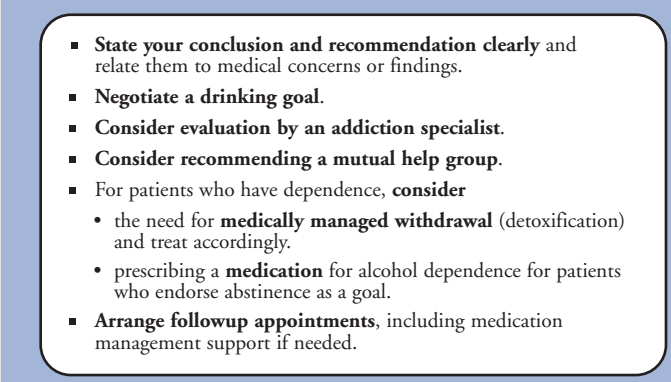
#### STEP 4 At Followup: Continue Support

REMINDER: Document alcohol use and review goals at each visit.



### FOR ALCOHOL USE DISORDERS (abuse or dependence)

#### STEP 3 Advise and Assist



#### STEP 4 At Followup: Continue Support

REMINDER: Document alcohol use and review goals at each visit.

